



# Clynder

Custom Cables

Clynder Cables Ltd  
3 Lord North Street  
Manchester  
M40 8AD

t: 0161 629 9333

f: 0161 629 9444

e: [bespoke@clyndercables.co.uk](mailto:bespoke@clyndercables.co.uk)

[www.clyndercables.co.uk](http://www.clyndercables.co.uk)



**Tailor made solutions...**



**Clynder**  
Custom Cables



Clynder Cables Ltd has decades of cable manufacturing experience. We want to share this experience with you by designing cables to meet your very own requirements regardless of the industry you are in.

- We can cut the installation costs for contractors who are installing multiple cables.
- We can give equipment manufacturers the exact specification cable required, so you don't have to "just make do" with the closest spec cable available.
- We can manufacture cables you can no longer source or have to import.
- We will make 100m or 1,000,000m the MOQ is up to you.
- You can free issue cores.

## Manufacturing Capabilities

**Insulated Cores** (UL/ CSA / BS Specification cables)

**Data or Power Screening** (Cu / Alu Foil)

**Lap & Braid** (PCW & TCW)

**Armouring** (GSWB & SWA)

**Sheaths** (PVC, PUR, PE, PP, LSOH , Alcryn)

**Composite Cables** (Bespoke cable combinations)

**Retractable Coil Leads**

**Existing Cable Conversions** (Over braiding, armouring, sheathing)

## Services

**Design**

**Testing**



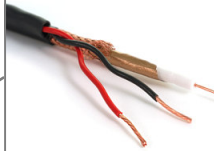
Clynder Cables Ltd holds both UL and CSA licences



## Can you benefit from a custom designed cable?



### Surveillance Camera's



Make your installation easy by creating your own custom cable bundle.

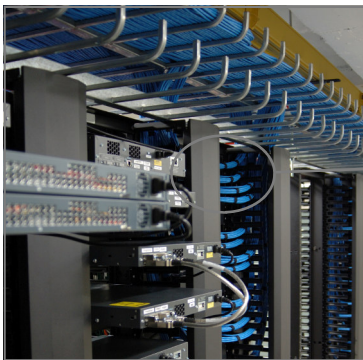
You specify the cores you require and we will do the rest.

### Control Cables



You don't have to make do with the multi-core control cables you buy off the shelf.

We can help design and manufacture control cables for your specialist needs.



### Structured Wiring

We can get multiple cables from A-B without the mess.

Why not get us to Over Sheath a bundle of data cables, Ideal for repeat installations.



### Home Automation & Intelligent Buildings



Millions are spent each year on equipment to automate the home and create smart buildings.

That equipment is only as good as the cable connecting it. We can create a job specific cable to meet your needs that will cut your installation costs.



Clynder Cables Ltd  
3 Lord North Street  
Manchester  
M40 8AD



Clynder  
Custom Cables

t: 0161 629 9333  
f: 0161 629 9444  
e: [bespoke@clyndercables.co.uk](mailto:bespoke@clyndercables.co.uk)  
[www.clyndercables.co.uk](http://www.clyndercables.co.uk)

## ENQUIRY FORM

### CONTACT INFORMATION

Company Name: \_\_\_\_\_  
Contact Name: \_\_\_\_\_  
Address: \_\_\_\_\_  
Phone No: \_\_\_\_\_ Fax No: \_\_\_\_\_

### CABLE DESIGN INFORMATION

No of cores required: \_\_\_\_\_

Individual Core Descriptions, please provide information on Conductor, Size, Insulation.  
(I.E. Plain copper 1.0mm, PVC Insulation)

Core 1 / 2 \_\_\_\_\_ / \_\_\_\_\_  
Core 3 / 4 \_\_\_\_\_ / \_\_\_\_\_  
Core 5 / 6 \_\_\_\_\_ / \_\_\_\_\_  
Core 7 / 8 \_\_\_\_\_ / \_\_\_\_\_  
Core 9 / 10 \_\_\_\_\_ / \_\_\_\_\_

Other Requirements: (Please tick)

Ali / Mylar Tape

Braiding

Armouring

Over Sheath Material: (PVC / LSZH etc.) \_\_\_\_\_ Temp rating: \_\_\_\_\_

Please state **Application** and be specific, also state any **special instructions**